



Countywide Transportation Planning

Its Role in Helping Implement AB 32 / SB 375

ITE Workshop

San Francisco, June 16, 2011

John Sighamony

Senior Planner

Santa Clara Valley Transportation Authority



Presentation Outline

- What is SB 375 and the SCS
- Public Transportation Agency role in climate protection
- VTP 2035 – *things VTA is doing*
- Things Local Agencies are doing
- Challenges



SB 375 – A Brief Introduction

- Requires California Air Resources Board (CARB) to set regional greenhouse gas emission targets by September 30, 2010
- Each region must incorporate its target in its Regional Transportation Plan (RTP)
- Each region's RTP must include a Sustainable Community Strategy (SCS) or, in the alternative, adopt an Alternative Planning Strategy (APS) that addresses the target.



SB 375 – Intent

- Reduce Greenhouse Gas (GHG) Emissions
- Form collaborative frameworks between local jurisdictions (land use), transportation agencies, regional agencies, and state agencies
- Link together transportation and land use planning
- Link housing targets with ways to reduce GHG emissions



Sustainable Communities Strategy (SCS)

- Identify areas within the region sufficient to house all the population of the region, including all economic segments of the population, over the course of the planning period of the regional transportation plan
- Identify a transportation network to service the transportation needs of the region
- Quantify the reductions in greenhouse gas emissions the SCS is projected to achieve
- If an SCS cannot be met; then it is appropriate to consider an APS that addresses the GHG targets



Public Transportation Agency Roles in Climate Protection

Just a few:

- Improve transit
- Provide multimodal options/Complete Streets
- Support land use changes that make alternative modes more attractive, and allow for fewer and shorter trips and more efficient use of resources
- Create, adapt and use technology and infrastructure to conserve natural resources, develop renewable energy and materials, and reduce pollution



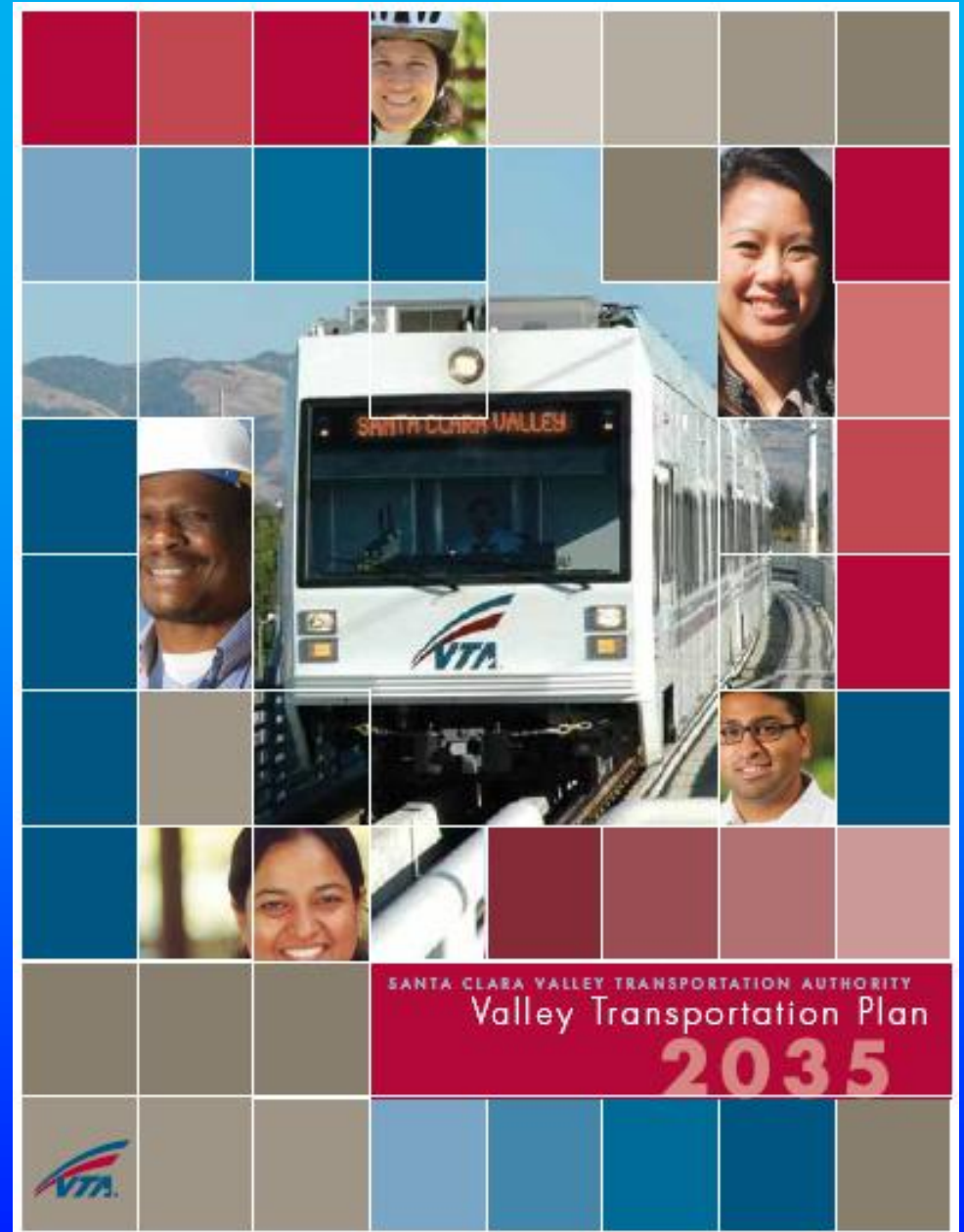
Local Agency Roles in Climate Protection

- Develop General Plans
- Address Land Use and Zoning
- Support TDM and other related measures
- Support transportation investments through land use changes

Valley Transportation Plan (VTP) 2035

Santa Clara County's 25-year
countywide transportation plan

16 local jurisdictions, multiple
public agency partners





VTP Planning Themes

- Pricing
- Transit
- Multimodal
- Land Use Coordination
- Efficiency / Integration
- Climate protection / Greening Transportation
- Funding



Pricing

- Silicon Valley Express Lane Program (projects)
 - ~55% of Bay Area Network
 - Built on HOV system / true network
 - Efficiency; gets more from existing investments
- Toll facilities??
- Parking??



Transit

- Measure A Program (projects)
- Access Studies (rider/pedestrian focus)
- First / Last Mile Connections (studies, project/program development)
- Efficiency Projects
 - Signals, transit priority, etc.
 - Embedded in projects
- Bus Fleet Replacement (hybrid, etc.)
- High Speed Rail



Transit *(continued)*

- BRT Strategic Plan (complete/implemented)
- Express Bus Business Plan (complete/implemented)
- LRT Systems Needs Study (complete/implemented)
- COA (complete, implemented)
- Transit Sustainability Policy / Service Design Guidelines (complete, using)
- Community Bus (implemented/evolving)



Multimodal

- Bicycle Program
 - Countywide Bike Plan (Ped/Bike projects)
 - Bicycle Technical Design Guidelines
 - Bicycle Expenditure Plan
 - *Bike Sharing Pilot Program (new)*
- Congestion Management Program
 - TDM
 - Actions to encourage HD mixed use development
- Systems Integration Approach

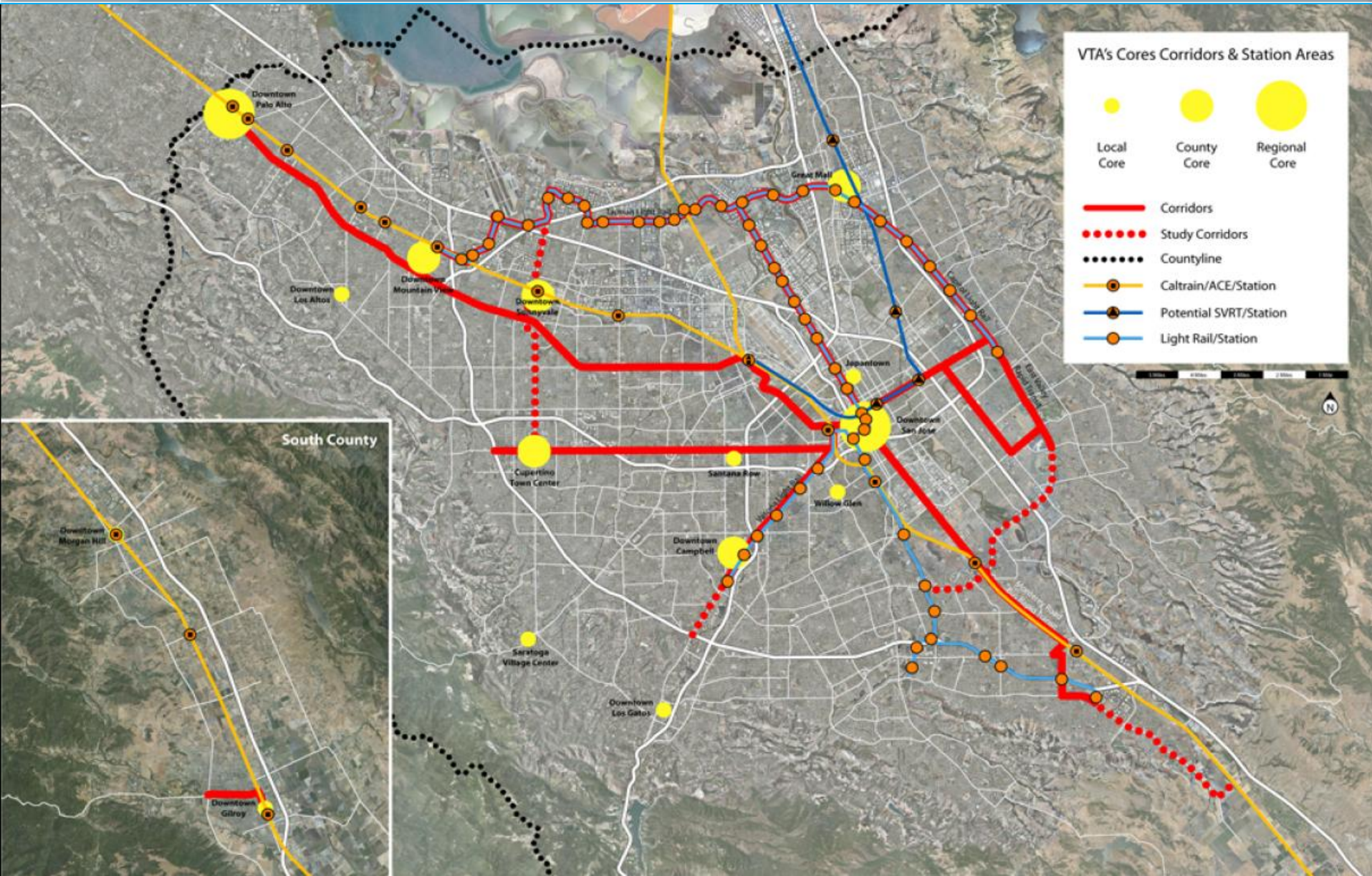


Land Use Coordination

- Community Design and Transportation (CDT) Program
 - Grassroots / adopted by all jurisdictions
 - CDT Manual
 - Grant fund programs
 - Lots of transit / challenge is to grow land uses
 - Focuses growth to cores, corridors and station areas



CDT Cores, Corridors & Station Areas





VTA Best Practices Manuals

Bicycle Technical Guidelines



A Guide for Local Agencies in Santa Clara County

- 1. 10' - 12' - 14' - 16' - 18' - 20' - 22' - 24' - 26' - 28' - 30'
- 2. 4' - 6' - 8' - 10' - 12' - 14' - 16' - 18' - 20' - 22' - 24' - 26' - 28' - 30'
- 3. Posted speed limit on Ardenwood 35 mph maximum.



Community Design & Transportation



A Manual of Best Practices for Integrating Transportation and Land Use



Pedestrian Technical Guidelines



A Guide to Planning and Design for Local Agencies in Santa Clara County





Efficiency / Integration

- Roadways (freeway ramp meters, signal systems, ITS/SOMS)FPI
- Silicon Valley Express Lanes
- Transit Operations
- Concept of Building Whole Roads / Whole Communities (integration)/Complete Streets



Climate Protection

- Transportation, Energy & Air Quality (TEAQ)
 - Provide framework for VTA efforts related to AB 32 / SB 375
 - Develop initiatives, projects, and programs, conduct research, and work with partner agencies to address climate change and energy issues
 - VTA Sustainability Program
 - Support/help develop other non or quasi transportation-related efforts



What Local Agencies Are Doing

- Regional Housing Needs Allocation (RHNA)
- General Plan Updates that address climate change
 - San Jose's Envision 2040
 - Santa Clara's GP Update 03/2011
- Climate Action Plans
 - City of Sunnyvale developing a CAP
 - City of Milpitas also developing a CAP



Regional Housing Needs Allocation (RHNA)

- Determines development capacity each local government must identify and zone for during the housing element planning period
- A policy based projection of household growth, with vacancy and replacement housing allowances
- Addresses the housing needs of all income groups resulting from population and employment growth and change – “Fair Share Plan”
- Part of the RTP (new)



AB 32 / SB 375 Questions

- Process?
 - Projections 2011; preparation for 2013 RTP
 - How will this affect transportation funding?
 - How will RHNA fit in?
 - Grassroots / Collaborative
 - General Plan changes [mandated?]
 - Practicable, sustainable, defensible, implementable
 - Will one size fit all?



Conclusion

Questions/Comments?