

LUNCHEON DETAILS FOR FEBRUARY 2006 MEETING

Date: Tuesday, February 14, 2006

Time: 11:45 a.m. – Mingling time
12:00 p.m. – Lunch

Place: **Michael's at Shoreline**
2960 N Shoreline Blvd
Mountain View, CA 94043
(650) 962-1014

Speaker/Subject : **Liz Wiecha, Chief Engineer & Deputy Director for the Transbay JPA
Transbay Terminal – A Multi-Modal Centerpiece**

Lunch: *Choose One*

- ❶ ROAST BEEF – ENGLISH CUT AU JUS
- ❷ BREAST OF CHICKEN - PORTOBELLO
- ❸ BROILED SALMON – LEMON BEURRE BLANC

All meals include: Green Salad, Vegetables, Potato du Jour, French Roll, Ice Tea, Coffee, and Sherbet

Cost: \$22

Students: \$5

RSVP: Please reply to Jaime Rodriguez by **Noon, Friday, February 10, 2006**
E-mail: jrodriguez@ci.milpitas.ca.gov or leave a message at (408) 586-3335 (direct line).

For each reservation, please remember to include each attendee's name, affiliation, and phone number.

Please note: If you make a reservation, food is ordered for you, so you must pay, even if you do not attend the meeting.

Early RSVP Reward:

Submit your lunch reservation by the RSVP date and be included in a drawing for a \$10 Starbucks gift card.

Your SBTOA Elected Officers:

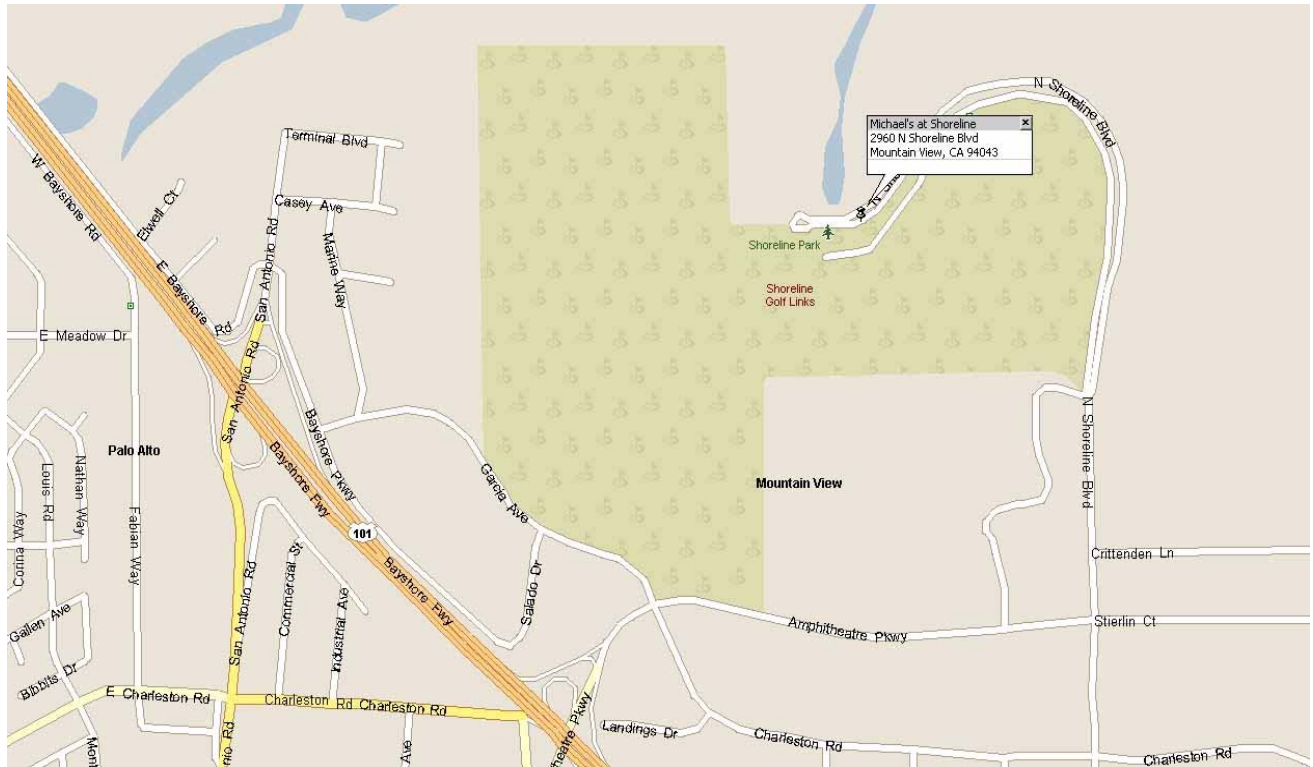
President: Laura Wells, San Jose - Department of Transportation

Vice-President: John Litzinger, HNTB Corporation

Secretary-Treasurer: Jaime Rodriguez, City of Milpitas

Past President: Steve Fitzsimons, Republic Electric

Map to Michael's at Shoreline



ITE Bay Area Section Notes

SBTOA is an affiliated chapter of the Institute of Transportation Engineers (ITE) San Francisco Bay Area Section. We strongly encourage SBTOA members to join ITE if they have not already done so to enjoy the numerous benefits including:

- Receipt of the monthly national publication (ITE Journal)
- Discounted rates on transportation publications and conferences and other savings
- Direct access to the largest, nationwide network of transportation professionals.

Visit: www.sfbayite.org for more info on future ITE meetings.